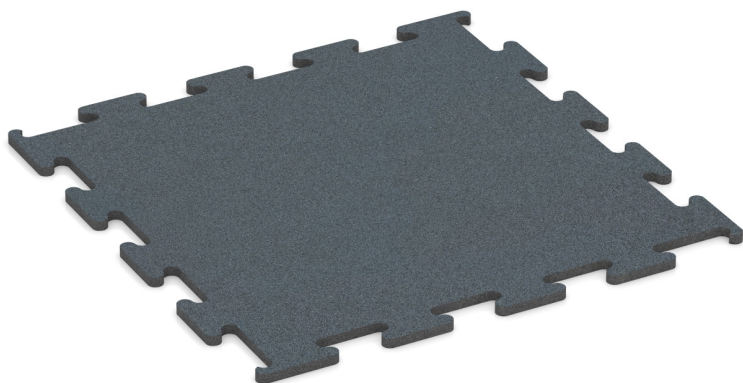


Fitness Performance Elite Training Floor (DZ)

The WARCO Fitness Performance Elite Training Floor is a calibrated indoor puzzle tile available in 50 × 50 and 100 × 100 cm and in thicknesses of 1.0 / 1.5 / 2.0 cm. Thanks to the precise cut without bevel, it creates an almost closed surface with outstanding dimensional accuracy.

The compacted structure makes the floor abrasion-resistant, pressure-stable and durable. The slip-resistant surface ensures safe footing, while vibrations and noise are reduced. Easy to install, low-maintenance and robust – the professional solution for demanding studios and ambitious home gyms.



Product data

Colour	Fern Green	Weight	20 kg/piece = 20 kg/m²
Fixing system	Cut jigsaw interlock without bevel	Conversion	1 m² = 1 piece
Dimensions	1060 x 1060 x 20 mm	factor Usable dimensions	100 x 100 x 2 cm 1,00 m²

Properties

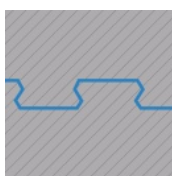
Colour Fern Green

Fern green is achieved by coating black recycled tyre rubber granules (ELT) with a green-pigmented polyurethane binder. The result is a muted, calm green with natural character and a subtle pepper-and-salt texture where the dark granules show through. Over time, the pigmented coating gradually wears, causing the shade to darken.



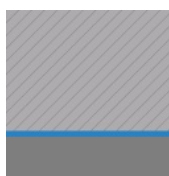
Material

This product is made from cleaned, black recycled tyre rubber granules (ELT) of fine grain size, bound with a polyurethane binder. The abbreviation ELT stands for “End of Life Tyres” – the granules originate from the recycling of used tyres. This composition produces a uniform, finely textured and compressed surface. For black or anthracite-coloured products, a colourless binder is used; coloured variants receive a pigmented binder.



Fixing system

Plates are precision-cut from larger stock, with the jigsaw interlock formed at the edges. Each edge fits perfectly to any adjacent edge to create a firm, position-stable connection. Since the edges are cut square—without bevel—only a hairline joint becomes visible. With consistent colour design, the individual plates are barely distinguishable; the surface reads as a single, continuous layer. The installation creates a homogeneous appearance whether for temporary or permanent applications.



Structure of the underside

The bottom surface is uniformly flat with no moulded structure. The product rests in full contact with the substrate beneath. This design does not provide a drainage cavity beneath the surface; consequently, any drainage requirement must be addressed through the base layer itself. Installation should be carried out on a permanently load-bearing substrate capable of supporting the applied loads. Refer to installation guidelines for correct laying procedures.

Fitness Performance Elite Training Floor (DZ)

Characteristics



Toxicologically safe

No impermissible pollutant emissions, initial rubber odour dissipates over time.



Efl (*)

Reaction to fire according to EN 13501-1: Efl
Also available with classification Cfl-s1.



Indoor

Suitable for indoor use only.
Avoid standing water.

Comparative values

Comparing technical data on a scale from 1 to 5 offers a practical way to objectively assess the relevant properties of WARCO products, making it easier to find the most suitable product for the intended application. Detailed information on the scale values and their calculation is available on the product detail page.

Slip resistance class DS (EN 14041) - Scale value 1 = Coefficient of friction approx. 0.3

Compressive strength - Scale value 5 = approx. 0 mm residual dent after 24 hours of unloading (BS 7188)

Abrasion resistance - Resistance to abrasive wear - Scale value 5 = "outstanding" (BS 7188)

Water Permeability (EN 12616) - Rating 1 = Infiltration approx. 0 mm/h (0 l/h/m²)

Slip resistance (EN 16165) - Scale value 2 = mean acceptance angle approx. 13°, group R10

Thermal insulation - Scale value 3 = Thermal conductivity approx. 0.11 W/(m·K)

Shock, vibration, and impact sound insulation - Scale value 2 = comfortable damping

Apparent density - scale value 5 = from 1000 kg/m³

Michael Schladt
WARCO Bodenbeläge
Andergasse 17
67434 Neustadt an der
Weinstraße

WARCO Gallery
Klemmhof 9
67433 Neustadt an der Weinstraße
Terminvereinbarung erforderlich.

Fachberatung
06321 9152391

E-Mail: info@warco.eu
web: www.warco.eu