



Edge tile (factory-cut) (BZ)

Edge tiles finish the outer edges of a tiled surface with a clean, straight line. On the inside and along the sides, they interlock precisely with the puzzle profile of the adjacent tiles, while the outer side forms a smooth edge – without any on-site cutting. The edge tiles are factory-cut from the original tiles supplied with the order and are delivered exclusively as a set of 2 together with full tiles.

Ordering edge tiles as factory-cut components only makes sense if the required surface dimensions are deliberately derived from the tile grid and match the intended final size. As these are factory-cut components, returns are excluded.

Product data

Colour	Terra Cotta	Weight	7.17 kg/Piece = 14.78 kg/m²
Installation	Interlocking puzzle joint with gently rounded bevel	Conversion	1 m² = 2.06 Piece
Packaging	1040 x 505 x 18 mm	Useful size	1000 x 485 x 18 mm

Properties



Colour Terra Cotta

The Terra Cotta colour design is made from newly manufactured non-toxic coloured EPDM rubber granules. It combines warm browns with intense reds and a hint of black to create a harmonious and vibrant surface. This combination is similar to the colour of fired clay, giving the material a natural, earthy appeal. The material is naturally UV resistant and will retain its colour over time. This colour scheme works well in environments where a warm and inviting atmosphere is desired. It complements both contemporary and more traditional nature-inspired designs.



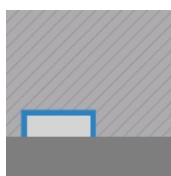
Material

The product has a two-layer structure and is manufactured using a moulding process. The lower functional layer consists of black ELT (End of Life Tyres) granulate, which is obtained from the recycling of ELT (End of Life Tyres). Chemically, the ELT granulate consists of a mixture of natural rubber (NR) and styrene butadiene rubber (SBR). The tread or wear layer consists of newly produced, fully coloured and pollutant-free EPDM (ethylene-propylene-diene rubber) granules with a medium grain size. This product meets exceptionally high standards of safety, durability and functionality.



Installation

The edges of the tiles are designed with an interlocking puzzle connection. Any side of a tile can be connected to any side of any other tile. The installation grid is 50 cm. During installation, the puzzle teeth precisely fit together to form a permanent connection, ensuring a stable and secure surface. The elegantly rounded bevel creates a modern, refined joint pattern with closed or narrow gaps.



Structure of the underside

The underside of the tile features a structure of approximately 4 mm deep drainage channels. The drainage channels of adjacent tiles interconnect to form a continuous network, ensuring the efficient runoff of rainwater. The tiles can be installed on a bound base layer, on roof waterproofing systems, or on suitable gravel grids. Please follow the installation guidelines for proper application.

Edge tile (factory-cut) (BZ)

Characteristics



Suitable for chlorinated water

Good resistance to chlorinated water, chlorinated cleaning agents and swimming pool water.



Frost resistant

Resistant to frost and freezing water within the material – no cracking, tearing or breaking.



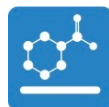
Cfl-s1

Fire behaviour according to EN 13501-1: Cfl-s1
Limited contribution to fire – Low smoke emission



Indoor and Sheltered Outdoor Areas

Suitable for indoor and sheltered outdoor areas.
Avoid waterlogging and continuous moisture exposure.



Toxicologically safe

No impermissible pollutant emissions, initial rubber odour dissipates over time.



Colourfast and UV-resistant

The surface made of EPDM rubber granules is colourfast and long-term UV-resistant (sun).

Comparative values

The comparison of technical data on a scale from 1 to 5 provides a practical way of objectively comparing the relevant properties of WARCO products, making it easier to find the most suitable product for the intended application. Detailed information on the scale values and their calculation can be found online on the product detail page.

Apparent density - scale value 2 = 780 to 840 kg/m³

Slip resistance class DS (EN 14041) - Scale value 5 = Coefficient of friction approx. 0.6

Abrasion resistance – Resistance to abrasive wear – Scale value 2 = "good" (BS 7188)

Water Permeability (EN 12616) – Rating 4 = Infiltration approx. 600 mm/h (600 l/h/m²)

Compressive strength - Scale value 2 = approx. 0.75 mm residual dent after 24 hours of unloading (BS 7188)

Shock, vibration, and impact sound insulation – Scale value 2 = comfortable damping

Thermal insulation – Scale value 2 = Thermal conductivity approx. 0.12 W/(m·K)

Slip resistance (EN 16165) – Scale value 4 = mean acceptance angle approx. 16°, group R10

Michael Schladt
WARCO Gulvbelægninger
Andergasse 17
67434 Neustadt an der
Weinstraße

WARCO Gallery
Klemmhof 9
67433 Neustadt an der Weinstraße
Onsdag til fredag, 10:00 - 16:00

Faglig rådgivning
+49 6321 9152391

E-mail: info@warco24.dk
Internet: www.warco24.dk